



ROCKY MOUNTAIN MINERAL LAW FOUNDATION

www.rmmlf.org

58TH ANNUAL ROCKY MOUNTAIN MINERAL LAW INSTITUTE

**July 19-21, 2012
Newport Beach, California**

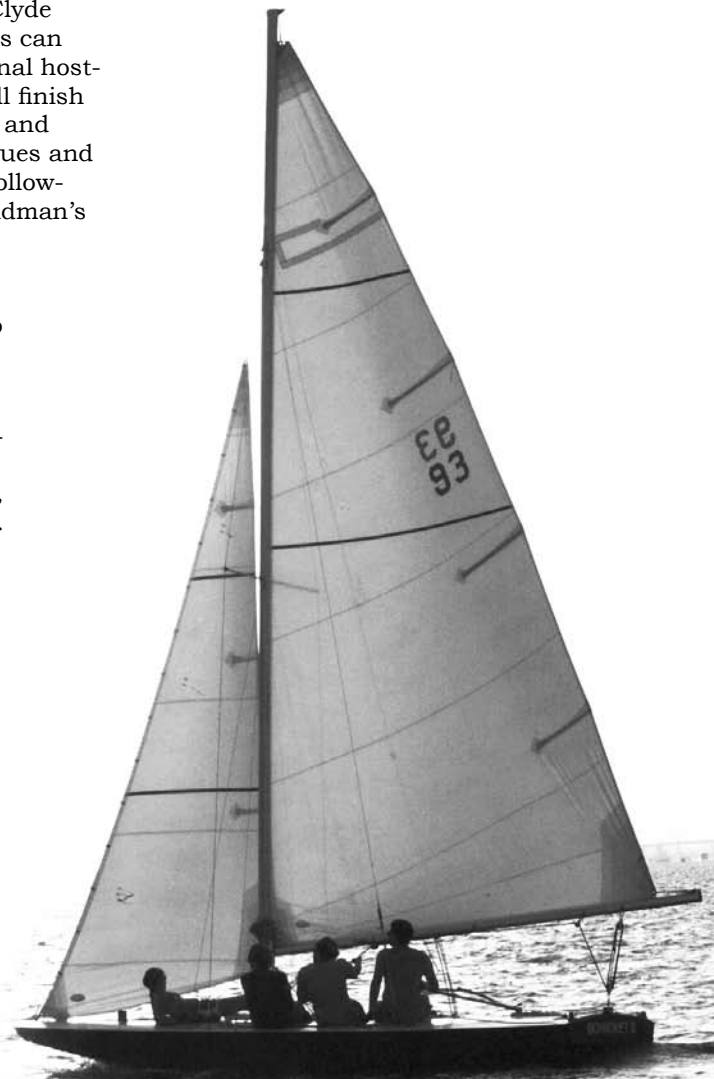
A new location for this summer's Annual Institute, Newport Beach offers a wealth of variety to its visitors. Whale migration tours, museum hopping (world cultures, nautical, automotive, and sports), the Balboa Fun Zone for kids, beach tide pools, fishing, kayaking, walking and hiking tours, bike or Segway along the boardwalk, paddle boarding, and golfing to name a few.

The 58th Annual Institute program opens with a General Session on Thursday morning following presentation of the annual Clyde O. Martz Award Teaching Award. In the afternoon, attendees can choose between Oil & Gas and Water Sections. Our traditional hosted Thursday evening reception for registrants and guests will finish out the day. Friday morning will be split between Oil & Gas and Mining, and Friday afternoon split between International Issues and Public Lands. The program adjourns at noon on Saturday following morning split sections on Environmental Issues and Landman's Issues.

Also, join us for a special dessert reception at the poolside Rose Garden on Wednesday evening, 8:00 – 9:00pm, open to everyone.

Hotel rooms are blocked at the Marriott Newport Beach, our headquarters and the location of all sessions. The discounted room block is filling quickly, but we do have overflow rooms at the Island Hotel, the Balboa Bay Club, Pelican Hill, and the Hyatt Regency. See inside for complete information.

Thinking about bringing the family? Disneyland (30 minute drive); LEGOLAND and Universal Studios Hollywood (an hour drive); and Catalina Island, Knott's Berry Farm, the Long Beach Aquarium, San Diego Safari Park and San Diego Zoo, and Sea World, all within a two hour drive.



58TH ANNUAL ROCKY MOUNTAIN MINERAL LAW INSTITUTE

Registration - Marriott Newport Beach, 900 Newport Center Drive

Wednesday, July 18, 9:00am – 7:00pm

Thursday, July 19 and Friday, July 20, 7:00am – 5:00pm

Saturday, July 21, 7:00am – Noon

PROGRAM

Thursday Morning, July 19, 2012 - General Session

8:30 – 8:50 AM **Introductions**

8:50 – 9:00 AM **Clyde O. Martz Awards**

9:00 – 9:50 AM **The Outlook for Energy: A View to 2040**

TODD W. ONDERDONK, Senior Energy Advisor, Corporate Strategic Planning, Exxon Mobil Corporation, Irving, TX

9:50 – 10:20 AM - **Break**

10:20 – 11:10 AM **Investment Decision Making, “Challenging” Places, and the Extractive Industries**

PATRICK J. GARVER, Senior Advisor, The Good Governance Group, Toronto, ON; formerly, General Counsel, Barrick Gold Corporation

11:10 – Noon **The Five Worst Developments in Public Land Law and Policy Since the Passage of FLPMA**

ROBERT L. GLICKSMAN, Professor of Law, George Washington University Law School, Washington, DC - Moderator

PAUL B. SMYTH, Of Counsel, Perkins Coie LLP, Washington, DC

JOSEPH M. FELLER, Professor of Law, Arizona State University College of Law, Tempe, AZ

Thursday Afternoon, July 19, 2012 - Split Sections

Oil & Gas Section (Part 1)

2:00 – 2:50 PM **One Fracing Regulatory Scheme to Rule Them All - Where Are the States Going and Will the EPA Stop Them?**

CHRISTOPHER S. KULANDER, Assistant Professor of Law, Texas Tech University School of Law, Lubbock, TX; Of Counsel, Haynes & Boone, LLP, Houston, TX

THOMAS E. KURTH, MICHAEL J. MAZZONE, and MARY S. MENDOZA, Attorneys, Haynes and Boone, LLP, Dallas, Houston, and Austin, TX

2:50 – 3:20 PM - **Break**

3:20 – 4:10 PM **You Found It, Now What Do You Do With It? - Gas and Oil Gathering in New Shale Plays**

ARTHUR J. WRIGHT and ANNA IRION, Attorneys, Thompson & Knight LLP, Dallas, TX

LARANNE A. BREAGY, Senior Vice President & General Counsel, M3 Midstream LLC, Houston, TX, and Durango, CO

4:10 – 5:00 PM **There’s Something in the Air: New and Evolving Air Quality Regulations Impacting Oil and Gas Development**

COLIN G. HARRIS, Attorney, Bryan Cave HRO, Denver, CO

Water Section

2:00 – 2:50 PM **Era of Uncertainty: The Colorado River Basin Supply and Demand Study**

CARLY JERLA, Hydrologic Engineer, Center for Advanced Decision Support for Water and Environmental Systems (CADSWES), U.S. Bureau of Reclamation, Boulder, CO

2:50 – 3:20 PM - **Break**

3:20 – 4:10 PM **Underground Water Banking**

CARLOS D. RONSTADT, Attorney, Brownstein Hyatt Farber & Schreck, LLP, Phoenix, AZ

4:10 – 5:00 PM **Water Supply for Shale Gas Production: Lessons from the River Basin Commission Management in the Mid-Atlantic States**

KEN WARREN, Attorney, Hangleby Aronchick Segal Pudlin & Schiller, Philadelphia, PA

5:00 – 7:00 - **Hosted Reception**

Hosted by the Foundation and Sponsors for registrants, spouses, and guests

Friday Morning, July 20, 2012 - Split Sections

Oil & Gas Section (Part 2)

8:20 – 8:50 AM Oil and Gas Law Update: The Latest Jurisprudence, Legislation, and Regulation

SAM NIEBRUGGE, Attorney, Davis Graham & Stubbs LLP, Denver, CO

8:50 – 9:40 AM Reservoir Development: Competing Rights of Horizontal and Vertical Developers and Other Oddities of Vertical Legal Principles Gone Sideways

JOHN W. MORRISON and WADE C. MANN, Attorneys, Crowley Fleck PLLC, Bismarck, ND

9:40 – 10:10 AM - Break

10:10 – 11:00 AM The Prudent Operator Standard in the 21st Century

JONATHAN D. BAUGHMAN, Attorney, McGinnis, Lochridge & Kilgore L.L.P., Houston, TX

11:00 – Noon Multijurisdictional Practice: The Ethics of Lawyering Here, There, and Everywhere

DAVID G. RIES, Attorney, Thorp Reed & Armstrong, LLP, Pittsburgh, PA

Mining Section

8:20 – 8:50 AM Mining and Public Land Law Update

SEAN B. MURPHY, Attorney, Day Carter & Murphy, LLP, Sacramento, CA

8:50 – 9:50 AM To Fill Or Not To Fill: Reclamation and Closure Considerations for Open-Pit Mines

MURRAY D. FELDMAN and HADASSAH M. REIMER, Attorneys, Holland & Hart LLP, Boise, ID and Jackson, WY

9:50 – 10:10 AM - Break

10:10 – 11:00 AM Programmatic Agreements, MOUs, MOAs, and Other Federal Agency Agreements: Separating the Nothingburgers from Agreements that Alter Legal Rights

CONSTANCE L. ROGERS, Attorney, Davis Graham & Stubbs LLP, Denver, CO

11:00 AM – Noon Strategic Considerations in a Typical TSX Mining Takeover - A Case Study

MICHAEL COLBORNE, Attorney, Thorsteinssons LLP, Toronto, ON
JEFFREY P. ROY, Attorney, Cassels Brock & Blackwell LLP, Toronto, ON

Friday Afternoon, July 20, 2012 - Split Sections

International Section

2:00 – 3:00 PM Free, Prior, and Informed Consent – The Legal Underpinnings and How They Are Reflected in the Laws of Peru and Canada

LUIS CARLOS RODRIGO PRADO, Attorney, Estudio Rodrigo, Elias & Medrano, Lima, Peru

KEVIN O'CALLAGHAN, Attorney, Fasken Martineau DuMoulin LLP, Vancouver, BC

3:00 – 3:30 PM - Break

3:30 – 4:20 PM Form Cinco Revisited: A Brazilian Case Study

PETER L. WEBSTER, Senior Corporate Counsel, Rio Tinto Regional Center, South Jordan, UT

CARLOS VILHENA, Attorney, Pinheiro Neto Advogados, Brasilia, Brazil

4:20 – 5:10 PM Global Anticorruption and Transparency Standards: Implications for the Extractive Industries

MICHAEL PASS, Senior Counsel-Compliance, Freeport-McMoRan Copper & Gold Inc., Phoenix, AZ

BRITTANY PRELOGAR, Attorney, Steptoe & Johnson LLP, Washington, DC

Public Lands Section

2:00 – 3:00 PM NEPA on Public Lands – What Can “Old” Energy Learn from “New” Energy?

NICHOLAS C. YOST, Attorney, SNR Denton LLP, San Francisco, CA - Moderator

STEVE BLACK, Counselor to the Secretary, U.S. Department of the Interior, Washington, DC

NADA CULVER, Director and Senior Counsel, BLM Action Center, The Wilderness Society, Denver, CO

HORST GRECZMIEL, Associate Director for NEPA Oversight, Council on Environmental Quality, Washington, DC

ALBERT FERLO, Attorney, Perkins Coie LLP, Washington, DC

3:00 – 3:30 PM - Break

3:30 – 4:20 PM The Administrative Record in Public Land Litigation

K. JACK HAUGRUD, Acting Principal Deputy Solicitor, U.S. Department of the Interior, Washington, DC

4:20 – 5:10 PM Sage-Grouse, Prairie Chickens, Sand Dune Lizards: Policy Development in the Courts, Federal Agencies, and the States Addressing Imperiled but Not (Yet?) Listed Species

FEDERICO CHEEVER, Professor of Law and Associate Dean, University of Denver College of Law, Denver, CO

Saturday Morning, July 21, 2012 - Split Sections

Environmental Section

9:00 – 10:00 AM Environmental Update – Keeping the Issues Straight in the Mining Industry

KAREN BENNETT, Attorney, Hunton & Williams LLP, Washington, DC; formerly Vice President, Environmental Affairs, National Mining Association

10:00 – 10:20 AM - **Break**

10:20 – 11:10 AM Emerging Clarity: An Overview of Recent Air Quality Litigation Arising From Public Land Mineral Development

MATTHEW McKEOWN, Regional Solicitor, Rocky Mountain Region, Office of the Solicitor, U.S. Department of the Interior, Denver, CO

11:10 AM – Noon The Canary in the Coal Mine: Federal Environmental Regulatory Action Against Eastern U.S. Mining as a Harbinger for Natural Resources in the West

KIRSTEN L. NATHANSON, Attorney, Crowell & Moring LLP, Washington, DC

Noon - **Adjourn**

Landman's Section

9:00 – 10:00 AM Fraud, Misrepresentation, and Related Ethical Issues in Obtaining Leases

KEITH B. HALL, Attorney, Stone Pigman Walther Wittmann L.L.C., New Orleans, LA

10:00 – 10:20 AM - **Break**

10:20 – 11:10 AM Deal or No Deal – Key Negotiating and Drafting Considerations in Letters of Intent and Option Agreements

CAROLINE THOMAS, Chief Counsel, Exploration, Property and Aboriginal Affairs, Vale Canada Limited, Toronto, ON

CARMEN DIGES, Attorney, Miller Thomson LLP, Toronto, ON

11:10 AM – Noon Drilling Down to Good Title: How to Read and React to a Title Opinion

LOIS A. HALL, Group Lead, Jonah Team, and HELEN M. CAPPAS, Group Lead, South Piceance Land Team, Encana Oil & Gas (USA) Inc., Denver, CO

EDWARD L. McLAUGHLIN, Land Manager, Enerplus Corporation, Denver, CO

TIM MORRIS, Vice President, US Business Development, Baytex Energy USA Ltd., Denver, CO

Noon - **Adjourn**

PROGRAM CHAIRS

<i>Program Chair</i>	PATRICIA J. WINMILL, Parsons Behle & Latimer, Salt Lake City, UT
<i>Environmental Chair</i>	LISA A. KIRSCHNER, Parsons Behle & Latimer, Salt Lake City, UT
<i>International Co-Chairs</i>	CECILIA GONZALES, Estudio Grau Abogados, Lima, Peru DAVID L. DEISLEY, Goldcorp Inc., Vancouver, British Columbia, Canada
<i>Landman's Chair</i>	JEFFREY R. FISKE, Anadarko Petroleum Corporation, Denver, CO
<i>Mining Chair</i>	EDWARD B. GRANDY, Barrick Gold of North America, Inc., Salt Lake City, UT
<i>Oil & Gas Co-Chairs</i>	KENNETH S. CULOTTA, King & Spalding LLP, Houston, TX STEVEN B. RICHARDSON, Bryan Cave HRO, Denver, CO
<i>Public Lands Co-Chairs</i>	BRET C. BIRDSONG, University of Nevada School of Law, Las Vegas, NV REBECCA W. WATSON, Welborn Sullivan Meck & Tooley, P.C., Denver, CO
<i>Water Co-Chairs</i>	REED D. BENSON, University of New Mexico School of Law, Albuquerque, NM HARRISON C. DUNNING, University of California School of Law, Davis, CA

SPECIAL FUNCTIONS

Sign up now - Seating is limited!

WEDNESDAY, JULY 18

Dessert Reception

(8:00-9:00pm)

We are hosting a dessert reception in the Rose Garden of the Marriott Newport Beach in honor of Dave Phillips, who is retiring after 42 years as Executive Director of the Foundation. We hope you can join us for some sweet treats. Please note the number of guests on the registration form.

Sponsorships for the Thursday Evening Reception

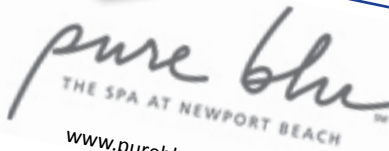
Our Thursday Evening Reception is always a highlight of the Annual Institute. Old acquaintances are renewed, new acquaintances are made, and the event provides a great opportunity to talk with friends that you do not regularly see except at the Institute.

The Foundation's policy of minimizing cost to attendees limits its budget for the Reception. Sponsorships will enhance the quality of this Reception, making it an even more enjoyable event for attendees.

If you are interested in becoming a sponsor for our hosted reception on Thursday night, July 19, please email us at info@rmmlf.org for more information.



The Entertainment Capital of L.A.
Discounted tickets available at
<http://Ushtix.com/rmmlf2012>



www.purebluspa.com

Mention RMMLF at Pure Blu Spa and get a 15% discount off of regular spa menu services. Call 949-720-7900 to schedule.

Pure Blu is 14,000 square feet with a private outdoor swimming pool, lounge chairs, cabanas, and poolside service. The spa offers private and coed relaxation rooms, showers with all the amenities, eucalyptus steam rooms, dry saunas, and salt water whirlpool jacuzzis.



Stuff for Kids

<http://tinyurl.com/nbfamily>

THURSDAY, JULY 19

Newcomers Breakfast

(7:15-8:15am)

For newcomers to the Foundation who would like to learn more about participating in Foundation activities, committees, and programs.

International Breakfast

(7:15-8:15am)

For registrants working in the international arena who wish to network with other professionals and learn more about the Foundation's international programs and outreach efforts. A representative from AMPLA will make a presentation.

In-House Counsel Lunch

(Noon-2:00pm)

Limited to in-house counsel. This is an opportunity to meet your peers, socialize, and network. A presentation may be included.

Natural Resources Law Teachers Lunch

(Noon-2:00pm)

For full- and part-time academic faculty who wish to network with new and old friends. We will talk about the site of the 2013 Teachers Institute, and hear a presentation by Professor Denis Binder from Chapman University School of Law.



The folks at Disney are offering our attendees and their families specially-priced Disneyland® Resort Tickets. For advance purchase, go to: <http://www.disneyconventionear.com/ZM5G12A>. Make sure your browser accepts pop-ups.

Tickets are valid from Wednesday, July 11, 2012 to Tuesday, July 24, 2012. Ticket store closes and tickets will no longer be available for purchase after 9:00 PM PST on Wednesday, July 18, 2012.

FRIDAY, JULY 20

Portia's Lunch

(Noon-2:00pm)

An opportunity for professional women from different generations, cities, and practices to meet, network, share experiences, and enjoy a program.

International Mining Professionals Society (IMPS) Lunch

(Noon-2:00pm)

A presentation (to be announced) for members of IMPS and other professionals in the field of international mining.

IPAA Law Committee Meeting Lunch

(Noon-2:00pm)

Discussion of current legal issues impacting oil and gas producers, for IPAA members and interested professionals.



Angels vs. Rangers

July 20, Friday, 7:05pm
July 21, Saturday, 1:05pm
For tickets and complete information:
<http://losangeles.angels.mlb.com>

OPTIONAL GUIDED TOURS:

- Laguna Beach Scenic Hike and Tide Pool Tour
- Art Crawl and Picnic Lunch at Heisler Park
- An Afternoon on Balboa Island
- A Day in Hollywood
- Harbor Cruise and Lunch
- Temecula Winery Tour and Olive Oil Tasting

For detailed information, visit our website at <https://www.rmmlf.org/AI58-Tours.pdf>
Sign up at <http://a3.acteva.com/orderbooking/go/RMMLF>



Newport Beach

Lodging Options

Newport Beach Marriott Hotel (headquarters)

- 900 Newport Center Drive
- \$249/night (single/double)
 - \$279/night (concierge level)
 - \$349/night (executive suite)
 - \$399/night (luxury suite)
- tel 506-474-2009; 800-266-9432

Fairmont Newport Beach

4500 MacArthur Boulevard
\$179/night (single/double)
tel 800-441-1414
4 miles from the Marriott

Island Hotel

690 Newport Center Dr
\$299/night (single/double)
tel 866-554-4620
½ mile from the Marriott

Hyatt Regency Newport Beach

1107 Jamboree Road
\$199/night (single/double)
tel 949-729-1234; fax 949-644-1552
2 miles from the Marriott

Resort at Pelican Hill

22701 Pelican Hill Rd S
\$450/night (single/double), plus:

- \$12/person portorage charge
- \$4/day room attendant gratuity for garden bungalows

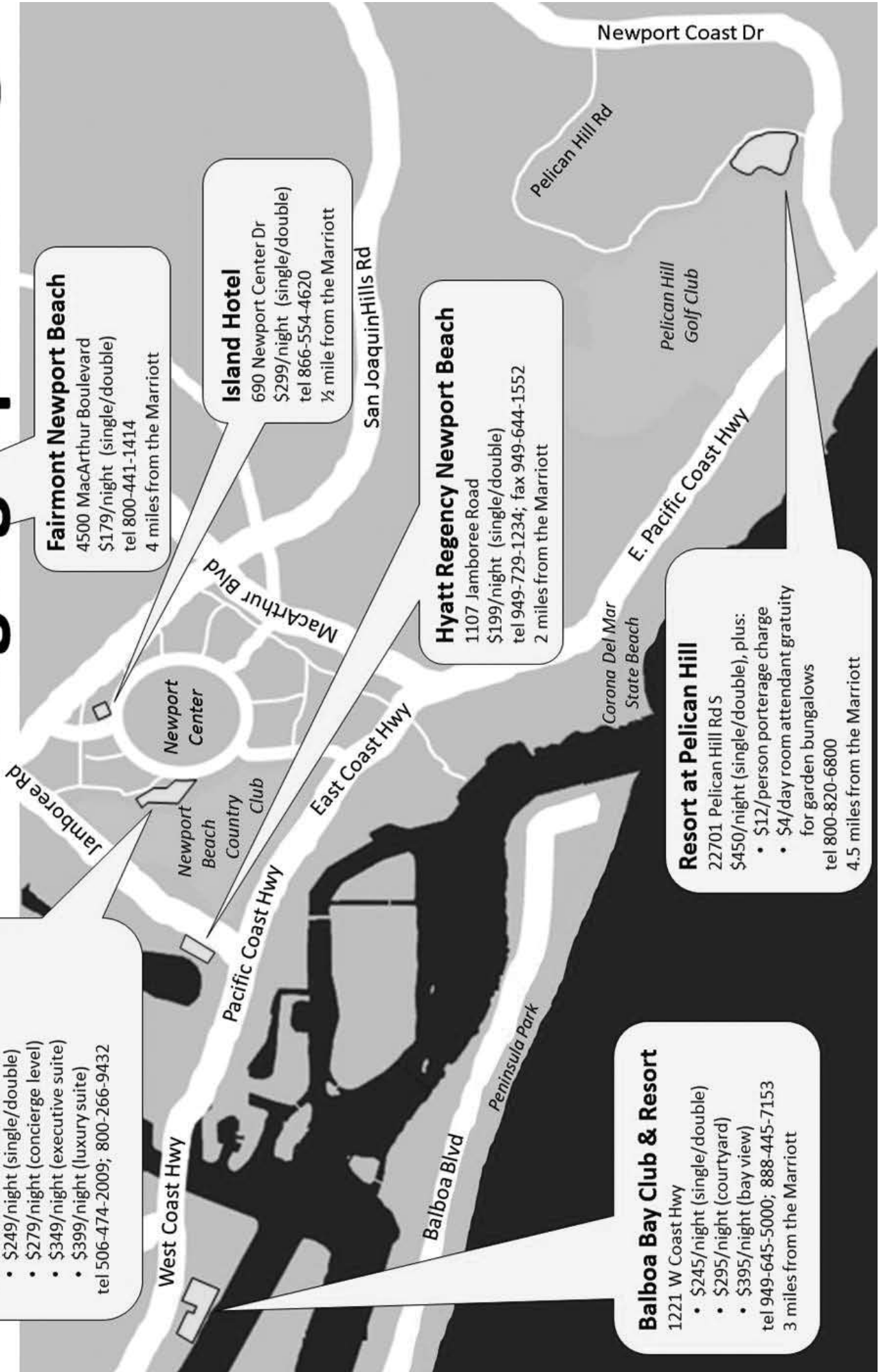
tel 800-820-6800
4.5 miles from the Marriott

Balboa Bay Club & Resort

1221 W Coast Hwy

- \$245/night (single/double)
- \$295/night (courtyard)
- \$395/night (bay view)

tel 949-645-5000; 888-445-7153
3 miles from the Marriott



Room Reservations

*Make your room reservations as soon as possible!
More than 500 people have already booked their rooms in Newport Beach.*

Rooms can now be reserved at substantially discounted rates. All sessions will be held at the Marriott Newport Beach, directly across the street from the world-famous Fashion Island.

We have a small number of additional rooms at discounted rates at four other classic Newport Beach properties: The Island Hotel, the Balboa Bay Club & Resort, the Hyatt Regency, and the Resort at Pelican Hill. Additional information is below.

Our Institute takes place during Newport Beach's busiest tourist season, so please reserve early. We had 1,056 attendees in

Santa Fe last year, and we sold out most hotels many months in advance. Newport Beach is a new destination for RMMLF, and we expect it to be popular.

For those wishing to extend their trips, hotels are offering our conference rate three days before and after the Institute, based on availability. Prices do not include taxes and tourism fee assessments (up to 12% plus 25 cents per night). When calling, please reference Rocky Mountain Mineral Law Foundation.

Newport Beach Marriott Hotel

(headquarters hotel for all meetings)

www.marriott.com/hotels/travel/laxnb-newport-beach-marriott-hotel-and-spa

\$249/night (single/double)
\$279/night (concierge level)
\$349/night (executive suite)
\$399/night (luxury suite)
tel 506-474-2009; 800-266-9432

For reservations, contact Lisa Lucas:

949-729-6957, lisa.lucas@marriott.com

Hyatt Regency Newport Beach

<http://newportbeach.hyatt.com>

Single/Double \$199/night
tel 949-729-1234; fax 949-644-1552
2 miles from the Marriott

Balboa Bay Club & Resort

www.balboabayclub.com

\$245/night (single/double)
\$295/night (courtyard)
\$395/night (bay view)
tel 949-645-5000; 888-445-7153
3 miles from the Marriott

Fairmont Newport Beach

www.fairmont.com/newportbeach

\$179/night (single/double)
\$229/night (junior suite)
\$269/night (executive suite)
tel 949-476-2001; 800-441-1414
4 miles from the Marriott

Resort at Pelican Hill

www.pelicanhill.com

22701 Pelican Hill Rd S
\$450/night (single/double), plus:
\$12/person portage charge
\$4/day room attendant gratuity for garden bungalows
tel 800-820-6800
4.5 miles from the Marriott
NOTE: To receive this extensively discounted rate at this five-star property, a NON-REFUNDABLE two-night deposit is required with your reservation

Island Hotel

www.islandhotel.com
\$299/night
tel 866-55-
<http://booking.islandhotel.com/istat>
&hotelID=64
1/3 mile from the

SOLD OUT

*Please contact us if you have any questions or
if you encounter any problems when making your room reservations.*

Airline Flights

The Marriott Hotel is about 5 miles from John Wayne Airport – Orange County (SNA); 25 miles from Long Beach Airport (LGB); 45 miles from Los Angeles International Airport (LAX); and 49 miles from LA/Ontario International Airport (ONT).

United/Continental Airlines is offering discounts to attendees of the Annual Institute.

For details, see: <https://www.rmmlf.org/AI58-Airfare.pdf>

Newport Beach Airport Transportation

Shuttle: For economical transportation from the airport to your hotel, we have discounts with SuperShuttle:
<https://www.supershuttle.com/default.aspx?GC=RUAVK>

Chauffeur: For individual meet and greet from the airport to your hotel, we have discounts with Best Chauffeured:
<https://www.rmmlf.org/BestChauffeured.doc>

Car Rental: Hertz is offering special **discounts** by referencing Meeting CV#03NJ0007 and Rocky Mountain Mineral Law Foundation. Make reservations at www.hertz.com or call 800-654-2240 (U.S.); 800-263-0600 (Canada); or 405-749-4434 (International).

FUTURE ANNUAL INSTITUTE

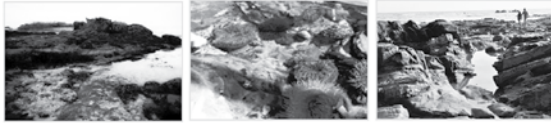
59th Annual Institute
Spokane, Washington
July 18-20, 2013

60th Annual Institute
Vail, Colorado
July 17-19, 2014

61st Annual Institute
Anchorage, Alaska
July 16-18, 2015

62nd Annual Institute
Squaw Valley, California
July 21-23, 2016

Laguna Beach Scenic Hike and Tide Pool Tour



Thursday, July 19, 2012
 10:30am-2:30pm



Explore the pristine coastal trails of Orange County with a guided interpretive hike through Laguna's 17,000 acres of protected wilderness.

INCLUDES:

- ACCESS uniformed representative to oversee event
- Deluxe round trip transportation
- Expert guide to lead and spot points of interest throughout the hike
- Box lunch, water bottle, fruit, and energy bar
- All gratuities

Minimum of 15 guests / Maximum of 22 guests

PRICE: \$176 per person

CANCELLATIONS: By June 18, 2012

ATTIRE: Comfortable clothing (you may get wet) and shoes. No sandals or flip-flops. Sunscreen and hat or visor.

Art Crawl and Picnic Lunch at Heisler Park



Thursday, July 19, 2012
 10:30am-2:30pm



Take an intimate look at the finer side of Southern California in Laguna Beach, best known as an artistic and quaint village community, home to nearly one hundred art galleries and one-of-a-kind shops and boutiques. Led by a practicing artist who has pieces of his own work displayed in many museums, including the Smithsonian, our expert guide will provide insight into the tricks of the trade and



Eco-Activity: Environmentally responsible with a fun and educational focus on our local surroundings.



Mild: Modest walking, slight physical exertion. Great for all skill levels!



Moderate: Moderate walking and physical exertion such as stair climbing and/or traveling uneven surfaces.

the history of the artists, and will offer a unique learning experience. The Gallery Hop will have transportation to each gallery, the opportunity to purchase items if desired, and an unforgettable afternoon!

The tour will conclude with a luncheon at one of Laguna's most popular sites, Heisler Park, with colorful gardens on the cliffs of Laguna Beach and a delicious picnic lunch with a view of the ocean.

INCLUDES:

- ACCESS uniformed representative to oversee event
- Deluxe round trip transportation
- Guided tour of Laguna Beach Art Galleries
- Picnic lunch at Heisler Park (non-alcoholic beverages included)
- All fees and gratuities

Minimum of 15 guests / Maximum of 22 guests

PRICE: \$149 per person

CANCELLATIONS: By June 18, 2012

ATTIRE: Resort-casual clothing and comfortable walking shoes

An Afternoon on Balboa Island



Thursday, July 19, 2012
 10:30am-3:30pm



Located in the heart of Newport Beach, this quaint and charming island community is a popular attraction for visitors. Best seen on foot, this island is home to more than 70 gift shops, galleries, and restaurants. View stately yachts moored at the docks, and homes with an enchanting mix of architectural styles. Catch the Balboa Ferry for a memorable ride to the Balboa Peninsula, and play like a kid again at the "Balboa Fun Zone." Casual attire and comfortable walking shoes.

INCLUDES:

- ACCESS uniformed representative to oversee event
- Deluxe round trip transportation
- Free time to shop, eat lunch, and wander the Island
- Famous Dad's Balboa Bar
- All fees and gratuities

Minimum of 20 guests/ Maximum of 30 guests

PRICE: \$65 per person

CANCELLATIONS: By June 18, 2012

ATTIRE: Resort-casual clothing and comfortable walking shoes

A Day in Hollywood



Thursday, July 19, 2012
9:30am-5:30pm



Our walking tour departs from the heart of Hollywood and utilizes a unique live-audio headset for each guest. This is NOT a prerecorded tour, but simply an enhancement to overcome the street noise. You will see Hollywood's most famous landmarks including Grauman's Chinese Theatre (home of the famous hand and foot prints), Kodak Theatre (home of the Oscars), the Walk of Fame, El Capitan Theatre (Disney's premiere theatre), Grauman's Egyptian Theatre (where the movie premiere was born), and the Roosevelt Hotel (birthplace of the Oscars). The motorcoach portion of the tour will range from the sophisticated urban center of downtown to the world's entertainment capital, including many of the most popular landmarks such as the Capitol Records Building and the famous HOLLYWOOD sign!

Guests will have lunch at Hard Rock Café. This world-famous combo restaurant and rock and roll museum showcases new and unique interactive experiences – from an 18' x 4' rock wall, to touch screens in the booths featuring innovative technology that enables fans to explore rock 'n' roll memorabilia and virtually tour all of Hard Rock's venues worldwide.

INCLUDES:

- ACCESS uniformed representative to oversee event
- Deluxe round trip transportation
- Custom tour of Los Angeles and surrounds
- Lunch at Hardrock Café Hollywood (alcoholic beverages not included)
- All gratuities

Minimum of 40 guests / Maximum of 50 guests

PRICE: \$125 per person

CANCELLATIONS: By June 18, 2012

ATTIRE: Resort-casual clothing and comfortable walking shoes. Sunscreen and hat or visor.

Harbor Cruise and Lunch



Friday, July 20, 2012
10:30am-2:30pm

The best way to see Newport is from on the water. Hop on board this private yacht and see the Harbor in style. Cruise along one of the largest luxury small yacht harbors in the world as you travel through the 7 islands that make up Newport Harbor. Take in the magnificent million dollar homes while enjoying a delightful lunch aboard this luxury yacht, a Chris Craft Commander which boasts an overall length of 67 feet. The vessel has wide deck space, perfect for viewing the area's abundance of marine life, as well as plenty of indoor cabin area completely protected from the elements.

INCLUDES:

- ACCESS uniformed representative to oversee event
- Deluxe round trip transportation
- Private chartered yacht
- Lunch on board yacht (alcoholic beverages not included)
- All fees and gratuities

Minimum of 16 guests / Maximum of 24 guests

PRICE: \$205 per person

CANCELLATIONS: By June 18, 2012

ATTIRE: Resort-casual clothing. Sunscreen and hat or visor.

NOTE: This vessel does not leave the harbor and will not be in the open ocean. Those prone to sea-sickness should be comfortable on this excursion.

Temecula Winery Tour and Olive Oil Tasting



Friday, July 20, 2012
9:30am-5:30pm

You will be transported to the historic Temecula Valley – also known as "Sunlight Through the Mist" - on a relaxing and fascinating journey. This Wine Country tour takes you on a visit to some of California's unique wineries. Enjoy a private tour and wine tasting at some of the following wineries:

WILSON CREEK WINERY & VINEYARDS

The winery grounds and gardens are the pride and joy of the Wilson family. Long known as the "fun" winery along Winery Row, the family legacy of Wilson Creek is alive in all aspects of this Tuscan-themed get-away.

LEONESSE CELLARS WINERY

The word Leonesse, meaning "village of dreams," is the inspiration behind this winery's lifelong quest to create world class wines from the finest vineyards in the Temecula Valley.

In addition to the Temecula winery tours, the group will also stop at the Temecula Olive Oil Company for a brief history of this Olive Ranch and to enjoy a private tour and tasting.

TEMECULA OLIVE OIL COMPANY

Temecula Olive Oil Company, family-owned and operated, is committed to using only California olives to make the highest quality olive oil.

INCLUDES:

- ACCESS uniformed representative to oversee event
- Deluxe round-trip transportation
- Tour and Tasting at two wineries, with lunch at one of them
- Tour and Tasting at the Temecula Olive Oil Company
- All gratuities

Minimum of 20 guests / Maximum of 30 guests

PRICE: \$235 per person

CANCELLATIONS: By June 18, 2012

ATTIRE: Resort-casual clothing and comfortable walking shoes.

Optional Activities

More information at <https://www.rmmf.org/A158-Tours.pdf>
Sign-up at <http://a3.acteva.com/orderbooking/go/RMMLF>

More information at
<https://www.rmmf.org/A158-Tours.pdf>
Sign-up at <http://a3.acteva.com/orderbooking/go/RMMLF>

ANNUAL
MEMBERSHIP
PROGRAM

2012

ANNUAL
MEMBERSHIP
CATEGORIES

The Annual Membership Program was established in the mid-1960s to promote the practical and scholarly exchange of information between individuals, corporations, law firms, and government agencies through programs of the Foundation.

Substantial discounts to Members include:

- A \$500 reduction in the registration fee for the 58th Annual Institute in Newport Beach, California;
- Discounts on registration fees for Special Institutes, Short Courses, and other programs;
- Discounts on many Foundation publications and audio CDs, including a considerable reduction in the price of the **Proceedings** of the 58th Annual Institute.

Free to Members:

- **Membership Directory** with alphabetical, geographical, and email listings; available fall 2012. Over 2,800 Directories were distributed to law firms and companies worldwide in 2011.
- **RMMLF Journal** – Two issues per year – Original Articles – Reprints – Topical Reading List

Individual Membership

Benefits accrue only to the individual. Law firms, companies, agencies, and other organizations are not eligible for Individual Membership.

Law Firm, Corporation, Government Agency, or Organization Membership

Membership is based upon the applicant's good faith determination of the total number of legal and land professionals involved in natural resources work, not on projected program attendance. Parent and subsidiary companies are eligible for a single membership, provided they are managed as a common unit.

University (Faculty) Membership

For full-time college and university faculty who wish to attend Foundation institutes at substantially discounted rates. Faculty and law school libraries also may purchase Foundation publications at special educational prices. Adjunct faculty generally are not eligible.

Senior Membership

For individuals who are fully retired, yet wish to continue to participate in Foundation activities.

APPLICATION FOR 2012 ANNUAL MEMBERSHIP

* NEW MEMBERS ONLY *

2011 Annual Members have been billed separately for renewals and should not submit this form.

Employer _____ Primary Contact _____
 Office Address _____
 City _____ State/Prov _____ Zip/Postal Code _____ Country _____
 Telephone () _____ Fax () _____ E-Mail _____ Date _____

For other than individual memberships, please print on a separate piece of paper all individuals who should be listed in the 2012 Membership Directory, including their email addresses, and their business addresses if different from your primary location. Note that although the "Greater than 15" category is unlimited in size, only a maximum of 25 persons whom you designate later in the year will be listed in the Directory and receive the RMMLF Journal.

Membership benefits are effective from January 1 – December 31, 2012.

CATEGORY	PRICE	PAYMENT METHOD
Individual	\$ 495	<input type="checkbox"/> Check drawn on a U.S. bank in U.S. Dollars (payable to Rocky Mountain Mineral Law Foundation) <input type="checkbox"/> VISA <input type="checkbox"/> MasterCard <input type="checkbox"/> American Express Credit Card # _____ Exp. Date (mo/yr) _____ Name on Card _____ Signature _____ <input type="checkbox"/> Electronic Transfer: Contact the Foundation at info@rmmlf.org
Firm/Corp/Agency/Organization:		
1-3 persons	\$ 965	
4-9 persons	\$ 1,625	
10-15 persons	\$ 2,365	
Greater than 15 persons	\$ 3,625	
University (Faculty)	\$ 335	
Senior (fully retired)	\$ 145	

Circle the correct category. Please pay in U.S. dollars.

Rocky Mountain Mineral Law Foundation
 9191 Sheridan Blvd., Suite 203
 Westminster, CO 80031 USA
 tel 303-321-8100 • fax 303-321-7657

REGISTRATION FORM



58th Annual Rocky Mountain Mineral Law Institute

(PLEASE TYPE OR PRINT LEGIBLY)

Name _____
 Badge Name (if different from above) _____
 Employer _____
 Mailing Address _____
 City/State/Zip _____
 Phone (____) _____ Fax (____) _____
 Attendee Email _____
 (required for confirmations, advance registration list, and program updates)
 Spouse/Guest Name Badge _____
 CLE credit requested for the following states: _____
 Other credit requested from: _____
 Attorney Landman CPA Management
 Consultant Other (please specify) _____

Register online at
<https://www.rmmlf.org>

Please pay in U.S. Dollars

Registrations & Payments Received

	thru 6/18/12	after 6/18/12
Registration Fee	<input type="checkbox"/> \$895	<input type="checkbox"/> \$995
RMMLF Members	<input type="checkbox"/> \$395	<input type="checkbox"/> \$495
Gov't Agency or Non-Profit Org. (submit PO# if required)	<input type="checkbox"/> \$545	<input type="checkbox"/> \$645
Student (full-time) (proof of status required)	<input type="checkbox"/> \$ 45	<input type="checkbox"/> \$145

The Rocky Mountain Mineral Law Foundation is a non-profit, tax-exempt corporation. (Tax ID #84-6037688)

**MAIL OR EMAIL
 REGISTRATION FORM
 AND PAYMENT TO:**

Rocky Mountain
 Mineral Law Foundation
 9191 Sheridan Blvd. #203
 Westminster, CO 80031 USA

tel 303-321-8100
 fax 303-321-7657

Questions/Registrations
 info@rmmlf.org

**Newport Beach
 Tours and Activities:**

<https://www.rmmlf.org/AI58-Tours.pdf>

Function	No. of Tickets	Price	Total
Registration Fee (see chart above)			\$ _____
Wednesday, July 18			
• Dessert Reception for Dave	_____	@ \$0	\$ _____ (comp)
<i>Please note # of tickets if you plan to attend</i>			
Thursday, July 19			
• Newcomers Breakfast	_____	@ \$39	\$ _____
• International Breakfast	_____	@ \$39	\$ _____
• In-House Counsel Lunch	_____	@ \$49	\$ _____
• Natural Resources Law Teachers Lunch	_____	@ \$49	\$ _____
Friday, July 20			
• Portia's Lunch	_____	@ \$49	\$ _____
• Int'l Mining Prof. Society (IMPS) Lunch	_____	@ \$49	\$ _____
• Independent Petroleum Ass'n of America (IPAA) Lunch	_____	@ \$49	\$ _____
GRAND TOTAL			\$ _____
U.S. Dollars			

PAYMENT INFORMATION

- Check drawn on a U.S. bank (payable to RMMLF in U.S. Dollars)
 VISA MasterCard American Express
 Credit Card #: _____ Exp. Date: _____
 Name on Card: _____ Signature: _____
 Electronic Transfer: Contact the Foundation at info@rmmlf.org

Office Use Only

AI58 _____
 S# _____
 INIT _____
 REFDT _____
 CK# _____
 AMT _____
 INIT _____

58TH ANNUAL ROCKY MOUNTAIN MINERAL LAW INSTITUTE

Rocky Mountain Mineral Law Foundation

9191 Sheridan Blvd., Suite 203
Westminster, CO 80031 USA
(303) 321-8100 / Fax (303) 321-7657

Non-Profit Org.
U.S. POSTAGE
PAID
Boulder, Colorado
Permit No. 273

GENERAL INFORMATION

Room Reservations: See inside for details.
Questions or Problems: email info@rmmlf.org

Car Rental: Hertz is offering special **discounts** by referencing Meeting CV#03NJ0007 and Rocky Mountain Mineral Law Foundation. Make reservations at www.hertz.com or call 800-654-2240 (U.S.); 800-263-0600 (Canada); or 405-749-4434 (International).

Registration Fees: Include course materials, refreshments, and hosted functions. These fees do not include hotel costs or transportation. Registrations will be accepted only when accompanied by a check, money order, government purchase order or training form, credit card information, or wiring information. No registrations can be processed without payment. If a registration form and payment are not received by June 29, 2012, your name may not appear on the final registration list.

Registration Cancellations: Refunds, less a \$50 administrative fee, will be given for cancellations received by 3:00pm on Thursday, June 28, 2012. No refunds will be given thereafter, although substitution of attendees may be made by contacting RMMLF. Cancellations must be made by fax at 303-321-7657, or email info@rmmlf.org. Registrants not entitled to a refund will receive a copy of the Institute outlines and related materials. For questions on refunds, complaints, and/or program cancellations, please contact our office at 303-321-8100.

Recording: Audio or video recording of this course is not permitted, except with the express permission of the Foundation.

Special Needs: If you have special needs addressed by the ADA, please notify us at least two weeks before the program.

CLE Credit: Foundation Institutes are typically accredited by all mandatory CLE states and Canadian provinces, the AAPL, NADOA and NALTA, and other professional organizations. Attorneys from certain states may be required to pay an additional fee. The course consists of approximately 13 hours of continuing education, including up to 2 hours of ethics. You must let us know at least 30 days in advance of the conference the states or organizations for which you will need credit (see registration form). RMMLF is a State Bar of California MCLE-approved provider.

CPE Credit: Rocky Mountain Mineral Law Foundation is registered with the National Association of State Boards of Accountancy (NASBA) as a sponsor of continuing professional education on the National Registry of CPE Sponsors. State boards of accountancy have final authority on the acceptance of individual courses for CPE credit. Complaints regarding registered sponsors may be addressed to the National Registry of CPE Sponsors, 150 Fourth Avenue North, Suite 700, Nashville, TN, 37219-2417. Web site: www.nasba.org. There are no prerequisites and no advance preparation is required to attend this course. The delivery method is Group-Live, and up to 15 CPE credits may be available, including up to 2 ethics credits. The program level is "overview."

Tax Deduction: Education expenses (including registration fees and travel costs) are deductible in the U.S. if they improve or maintain professional skills. Treas. Reg. § 1.162-5.

Cellular Telephones: Incoming ringing cellular calls are prohibited in the lecture room.