



Steptoe Capabilities

Grace Parke Fremlin
Partner

*5th REACH Registration Expo
Seoul, Korea*

STEPTOE & JOHNSON ^{LLP}

BRUSSELS ■ LONDON ■ WASHINGTON ■ NEW YORK
CHICAGO ■ PHOENIX ■ LOS ANGELES ■ CENTURY CITY

July 22, 2008

Step toe & Johnson LLP

- Multi-national law firm that specializes in US and EU regulations, facilitates international trade and investments and solves international business problems.
 - ✓ Over 500 lawyers worldwide
 - ✓ Offices in Washington, DC, Brussels, London, New York, Chicago, Los Angeles, Century City, Phoenix
 - ✓ Represent Key Fortune 100/500 companies and industry associations

Top Ranked

- International Trade – Ranked #1 by Chambers USA
 - ✓ 2007 International Trade Practice of the Year
 - ✓ Trade Remedies & Trade Policy
 - Korea-US FTA, Korea-EU FTA, NAFTA, CAFTA
 - ✓ Export Controls & Economic Sanctions
 - ✓ Cross-Border Investments & M&A
- Environment – Ranked by Chambers USA
- Fifteen other areas also top ranked by Chambers USA.

Key Lawyers – Washington, DC



Richard Cunningham

Ranked #1 in
International Trade,
Trade Policy, Trade
Remedies, WTO

Counsel to MKE on US
FTA & EU FTA



Amb. Susan Esserman

Head of International
Group, International
Trade

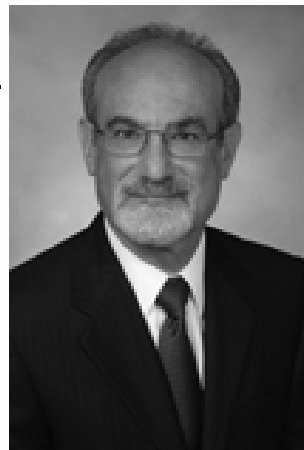
Former Deputy USTR



Grace Parke Fremlin

International Trade, Cross-
Border Investments and
M&A; Sourcing,
Manufacturing and
Distribution

Counsel to MKE and
Korean multinationals



Seth Goldberg

Head of Environmental
Group

Chemical regulatory

REACH

Top Ranked

- Chemical Regulatory and Environment practice in London and Brussels top ranked by Legal 500.
- International Trade/WTO practice top ranked by Chambers Global and Chambers Europe.

Step toe's Brussels Office

- Focus on EU Regulatory Law paired with Steptoe's commitment to comprehensive problem solving.
- Areas of emphasis include:
 - ✓ Chemicals Regulation (REACH, Biocides, Pesticides, WEEE ROHS, Environmental Liability)
 - ✓ Competition
 - ✓ International Trade
 - ✓ Insurance
 - ✓ Life Sciences
 - ✓ Belgian Law

Brussels Office Capabilities

- Litigation in European Courts
- International Trade Litigation
- Compliance Assistance
- Enforcement/Investigation Defense
- Government Affairs

Step toe's REACH Services

- Deep background in years of debate that has resulted in enactment of REACH
- Close monitoring of REACH implementation, including interfacing with key officials
- Decision to support our clients through REACH process
- Multi-disciplinary REACH team brings together technical consultants and lawyers with decades of experience dealing with EU regulatory matters

Step toe's REACH Services

➤ Representative industries for which we address REACH issues:

- Automotive
- Biotechnology
- Biocides
- Chemicals
- Cosmetics
- Electronics
- Machinery
- Medical Devices
- Metals
- Pesticides
- Petrochemicals
- Plastics
- Polymers
- Semiconductors
- Textiles
- Tires

Step toe REACH Services - Legal

- Interpretation Questions
- Pre-Registration
- Consortia
- SIEF and Pre-SIEF Participation
- Legal Agreements
- Antitrust / Competition Law
- Appeals
- Preparation of Registration Dossier
- Authorization and Restrictions
- Compliance Training

Step toe REACH Services - Technical

- Much of REACH compliance is technical
- Through strategic partnership with RCL, we provide technical services, including:
 - ✓ Pre-Registration
 - ✓ SIEF and Pre-SIEF Participation
 - ✓ Consortia
 - ✓ Preparation of Registration Dossier
 - ✓ Post-Registration
 - ✓ Authorisation

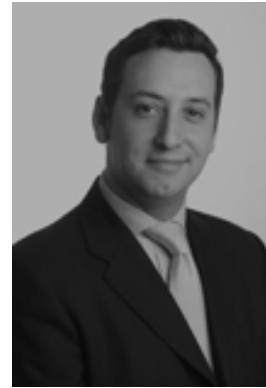
Key Lawyers - Brussels



Jim Searles

REACH &
International Trade

Trade Counsel to MKE
on EU FTA



Darren Abrahams

REACH EU Chemical
Regulations & Litigation

Life Sciences &
Environment



Craig Simpson

REACH & EU
Competition Law

EU Chemical
Regulations,
Life Sciences &
Environment



Laura Atlee

REACH & EU
Customs

Environment, Trade &
Competition

EU FTA

Step toe's Commitment to Korea

- Steptoe is committed to serving the needs of the Korean industry in the US, EU and elsewhere.
- Steptoe represented MKE in US FTA, represents KITA in the EU FTA, as well as Korean trade and industry associations and research institutes.
- Steptoe lawyers have won victories for MOFE, KDIC, and Korean companies in high-stakes litigation
- Steptoe attorneys have represented major Korean companies in cross-border US investments, M&A, and joint ventures.

Step toe Korea Practice

- US and EU Regulatory Law
- Antitrust and Competition
- Intellectual Property and IP Litigation
- International Arbitrations
- US Litigation
- Cross-Border Investments, Acquisitions, and Securities
- International Tax
- US Customs
- Anti-Corruption and Anti-Money Laundering
- US Immigration

Step toe Contacts



Seth Goldberg
Partner
Environmental Group
Step toe & Johnson LLP
1330 Connecticut Ave NW
Washington, DC 20036
Tel: +1 202 429 6213
sgoldberg@step toe.com



Grace Parke Fremlin
Partner
Korea Practice
Step toe & Johnson LLP
1330 Connecticut Ave NW
Washington, DC 20036
Tel: +1 202 429 3034
Mobile: +1 703 930 5152
gfremlin@step toe.com



Jim Searles
Partner
REACH
Step toe & Johnson LLP
Avenue Louise 240, Box 5
B-1050 Brussels
Tel: +32 2 626 0500
jsearles@step toe.com



Darren Abrahams
Barrister
REACH
Step toe & Johnson LLP
Avenue Louise 240, Box 5
B-1050 Brussels
Tel: +32 2 626 0500
dabrahams@step toe.com